



Beaufort County
Public Works
Stormwater Infrastructure
Project Summary

Project Summary: Highway 278 Retrofit Pond 38

Activity: Water Quality

Narrative Description of Project:

Duration: 1/15/15 - 2/23/17

Constructed a retrofit pond and 260 L.F. of channel. Installed sediment pad, 40 L.F. of channel pipe, sediment logs, rip rap and hydroseeded for erosion control.

2014-338 / Hwy 278 Retrofit Pond 38	Labor Hours	Labor Cost	Equipment Cost	Material Cost	Contractor Cost	Indirect Labor	Total Cost
AUDIT / Audit Project	3.5	\$82.22	\$0.00	\$0.00	\$0.00	\$46.31	\$128.52
CCON / Channel - constructed	90.0	\$1,958.50	\$667.63	\$279.49	\$0.00	\$1,102.80	\$4,008.42
CREC / Channel - reconstructed	50.0	\$1,235.20	\$301.04	\$43.74	\$0.00	\$691.60	\$2,271.58
DEBREM / Debris Removal - Jobsite	51.0	\$1,117.38	\$228.94	\$45.54	\$0.00	\$710.22	\$2,102.08
FENINST / Fence Installation	0.0	\$0.00	\$0.00	\$0.00	\$1,515.00	\$0.00	\$1,515.00
GRR / Grass Seed - Rye	34.0	\$716.21	\$30.60	\$108.98	\$0.00	\$442.60	\$1,298.39
HAUL / Hauling	859.0	\$19,190.03	\$7,885.30	\$14,249.59	\$0.00	\$12,535.70	\$53,860.62
LM / Loading Materials	467.5	\$10,753.80	\$3,939.34	\$3,197.03	\$0.00	\$6,691.55	\$24,581.72
ONJV / Onsite Job Visit	92.0	\$2,763.43	\$267.16	\$129.21	\$0.00	\$1,769.66	\$4,929.46
PAM / Preparing Ariel Maps	6.0	\$131.26	\$7.20	\$7.08	\$0.00	\$83.82	\$229.36
PGC / Pond - Grubb and Clear	240.0	\$5,307.00	\$2,443.77	\$846.48	\$0.00	\$3,348.84	\$11,946.09
PI / Project Inspection	20.0	\$473.90	\$36.00	\$19.80	\$0.00	\$307.20	\$836.90
PL / Project Layout	33.0	\$809.30	\$97.14	\$50.43	\$0.00	\$531.18	\$1,488.05
PM / Ponds - Maintenance	80.0	\$1,742.20	\$72.00	\$42.75	\$0.00	\$858.60	\$2,715.55
PROFS / Professional Services	0.0	\$0.00	\$0.00	\$0.00	\$14,116.90	\$0.00	\$14,116.90
PRRECON / Project Reconnaissance	21.0	\$502.91	\$36.10	\$34.06	\$0.00	\$322.18	\$895.25
PS / Push up soil	86.0	\$1,938.96	\$817.22	\$143.28	\$0.00	\$1,211.42	\$4,110.88
RB / Remove blockage from flowline	23.0	\$510.60	\$52.13	\$15.63	\$0.00	\$322.80	\$901.16
RD / Rainy Day	6.0	\$122.73	\$32.10	\$19.80	\$0.00	\$86.52	\$261.15
RMTRW / Remove trees - Workshelf	27.0	\$646.21	\$183.80	\$226.32	\$0.00	\$436.77	\$1,493.10
RRI / Rip Rap - Installed	80.0	\$1,742.20	\$132.90	\$119.72	\$0.00	\$1,102.80	\$3,097.62
SC / Sediment Control	228.0	\$5,171.85	\$1,037.13	\$674.57	\$1,223.77	\$3,136.69	\$11,244.01
SCR / Sediment Control - Removed	157.0	\$3,532.09	\$273.06	\$168.30	\$0.00	\$2,280.29	\$6,253.74
SG / Shoot Grade	28.0	\$633.92	\$25.20	\$19.95	\$0.00	\$380.24	\$1,059.31
SPI / Sediment Pad - Installed	87.0	\$2,015.80	\$182.13	\$55.42	\$0.00	\$1,303.32	\$3,556.67
STBY / Stand By	74.0	\$1,573.79	\$300.08	\$116.03	\$0.00	\$1,082.99	\$3,072.89
TC / Traffic Control - Jobsite	10.0	\$240.89	\$18.00	\$8.85	\$0.00	\$138.25	\$405.99
UB / Underbrush	40.0	\$891.40	\$80.20	\$31.68	\$0.00	\$565.80	\$1,569.08
UTLOC / Utility locates	8.5	\$219.67	\$0.00	\$8.85	\$0.00	\$133.58	\$362.10
WSDR / Workshelf - Dressed	30.0	\$660.50	\$36.00	\$55.48	\$0.00	\$429.30	\$1,181.28
WSGRB / Workshelf - Grubbed	56.0	\$1,218.76	\$443.87	\$105.72	\$0.00	\$767.28	\$2,535.63
WSSHN / Workshelf - Shinn cut	18.0	\$422.18	\$311.56	\$209.88	\$0.00	\$282.78	\$1,226.40
2014-338 / Hwy 278 Retrofit Pond 38	3,005.5	\$68,324.89	\$19,937.60	\$21,033.66	\$16,855.67	\$43,103.07	\$169,254.90
Sub Total							
Grand Total	3,005.5	\$68,324.89	\$19,937.60	\$21,033.66	\$16,855.67	\$43,103.07	\$169,254.90

Before



During



After



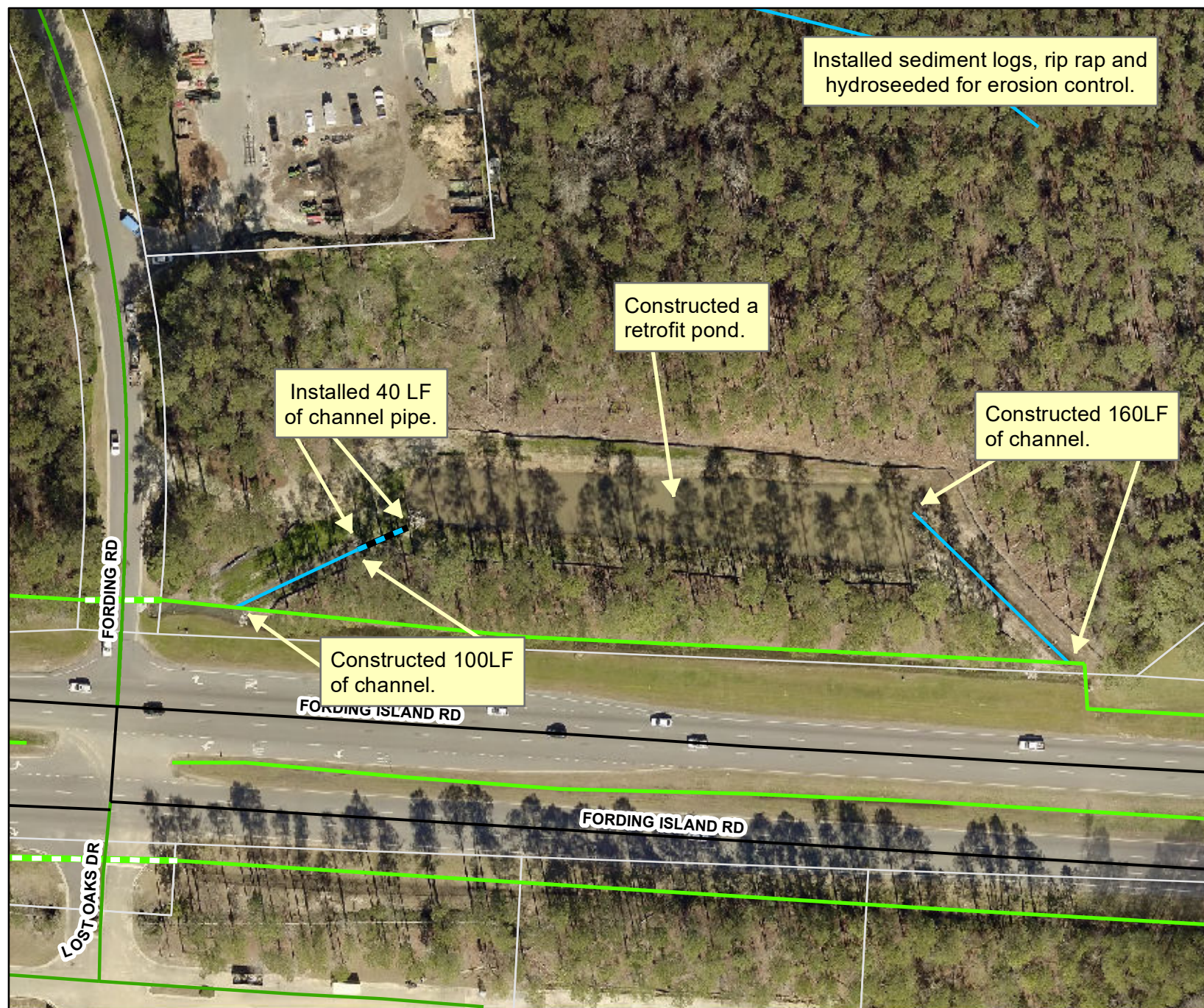
**Project: Hwy 278
Retrofit Pond 38**

**Activity: Water
Quality**

**Project #:
2014-338**

**Township/SW Dist:
Bluffton/9**

**Completed:
December 2016**



140 70 0 140 Feet

1 inch = 104 feet

Prepared By: BC Stormwater Management Utility

Date: Print 06/13/2017

File: C:\Project Summary Maps\2014-200\Hwy 278 Retrofit Pond 38